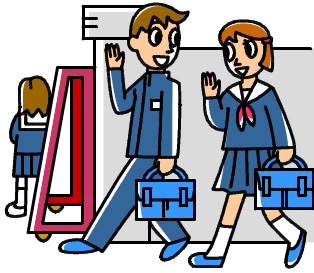


② A typical day at middle school

□ : □ Arrival



Punctuality is expected at schools in Japan.

※Check with your child's school and write in the usual time for each activity.

Students arrive punctually at school wearing their school's uniform (see p. 20). Travel to and from school is on foot.

※ If your child must be absent or late, or must leave school early, please inform the school. (see p. 30)

※ Depending on the school, students who live far from school may be allowed to use a bicycle. Students who commute by bicycle are expected to wear a helmet and ride safely.

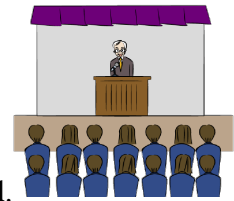
□ : □ Classes begin



1 period is 50 minutes, and 1 day consists of 5-6 periods, with 4 periods in the morning.

Morning Meeting: daily announcements and messages from supervising teachers. Students take turns chairing the meeting.

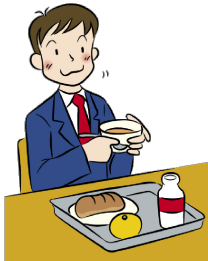
Several times a month morning assemblies and meetings of various student bodies are held.



Morning Greetings

There is a ten-minute break between classes. This is to get ready for the next class and to move to special classrooms (such as those for science, cooking, and computers). Students may also use the toilet at this time.

□ : □ Lunch

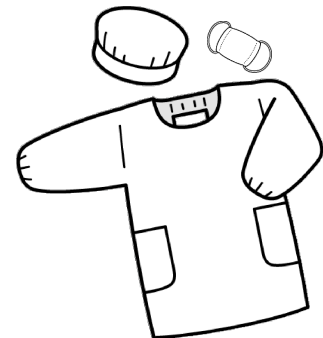


The lunch system varies by school and area. Please check with your child's school.

Schools in Aoi and Suruga Wards and part of Shimizu Ward serve lunch to all students, and those in most of Shimizu Ward serve lunch only to those who need it.

※ Lunch fee: around 4500 yen (month)

Schools that serve lunch have a lunch duty rotation in which students wear a mask and white robe to carry and distribute lunch trays. On Fridays, students bring their lunch duty clothes home to be washed and brought back on Monday.



White smock and mask

□ : □ Cleaning



※Varies from school to school.

Box lunches from home are occasionally required. See p. 32.

□ : □ Afternoon classes begin.



: Afternoon Meeting

※Only on days with 5 class periods.

The day's studies, materials, and homework are confirmed and noted in students' daily journals. Supervising teachers make announcements.

※On days with 6 periods, club activities begin at: :

After school students participate in club activities. Students may also choose not to join a club. After-school assemblies, student body meetings and committee activities are held several times a month.

Club activities end at different times depending on the time of year. Check with your child's school for details.

【Examples of Clubs】 ※ These vary from school to school.

[Sports Clubs]

- Baseball (boys) Soccer (boys)
- Basketball (boys and girls separate) Volleyball (boys and girls separate)
- Tennis (boys and girls separate) Table Tennis (boys and girls separate)
- Track and Field Swimming Judo Kendo (Japanese fencing)
- Softball (girls)



[Examples of cultural clubs]

- Band Art Computers Natural Science

The purpose of club activities is not only to win at competitions, but also for club members to extend their skills and learn how to work with people of different ages.

No club activities are held on Monday and, for some schools, Thursday.

